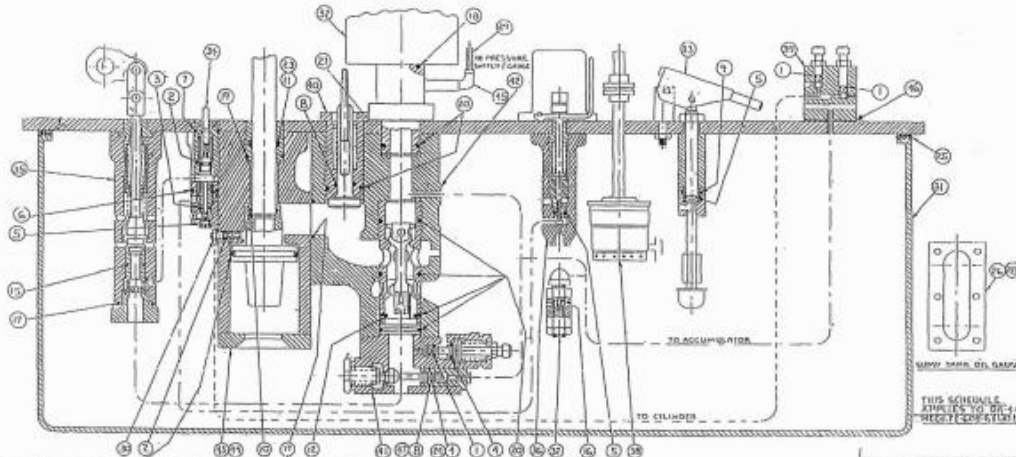




McGRAW EDISON
OA-4 MECHANISM

QTY	ITEM	DESCRIPTION	OEM	BSI #	QTY	ITEM	DESCRIPTION	OEM	BSI #	QTY	ITEM	DESCRIPTION	OEM	BSI #
3	1	ORING	223116010	2 0104	1	11	ORING	223116325	2 3254	2	21	BACKUP RING	223202459	42 349
2	2	ORING	223116012	2 0124	1	12	ORING	223116326	2 3264	2	22	BACKUP RING	223202456	42 346
1	3	ORING	223116110	2 1104	1	13	ORING	223116349	2 3494	2	23	BACKUP RING	223202435	42 325
2	4	ORING	223116111	2 1114	1	14	ORING	223116346	2 3464	1	24	BACKUP RING	223202309	40 311
3	5	ORING	223116113	2 1134	1	15	ORING	223116114	2 1144	1	25	GASKET	223171001	39292AMK
1	6	ORING	223116115	2 1154	1	16	ORING	223116013	2 0134	1	-	COTTER PIN		33997AMK
1	7	ORING	223116211	2 2114	2	17	ORING	223116225	2 2254	1	26	GASKET	FA0004126	39295AMK
2	8	ORING	223116212	2 2124	1	18	ORING	223116924	3 9244	2	27	GASKET	FA0003388	39296AMK
1	9	ORING	223116214	2 2144	1	19	ORING	223116227	2 2274	1	46	GASKET	E20021985	39294AMK
1	10	ORING	223116222	2 2224	6	20	ORING	223116228	2 2284	1	47	BACKUP RING	223202217	39298AMK



QTY	ITEM	DESCRIPTION	OEM	BSI #
1	11	ORING	223116325	2 3254
1	12	ORING	223116326	2 3264
1	13	ORING	223116349	2 3494
1	14	ORING	223116346	2 3464
1	15	ORING	223116114	2 1144
1	16	ORING	223116013	2 0134
2	17	ORING	223116225	2 2254
1	18	ORING	223116924	3 9244
1	19	ORING	223116227	2 2274
6	20	ORING	223116228	2 2284

PROPRIETARY AND CONFIDENTIAL
 THE INFORMATION CONTAINED IN THIS DRAWING IS THE SOLE PROPERTY OF BREAKER SERVICE INC. ANY REPRODUCTION IN PART OR AS A WHOLE WITHOUT THE WRITTEN PERMISSION OF BREAKER SERVICE INC. IS PROHIBITED.
 COPYRIGHT 2006

QTY	ITEM	DESCRIPTION	OEM	BSI #
2	21	BACKUP RING	223202459	42 349
2	22	BACKUP RING	223202456	42 346
2	23	BACKUP RING	223202435	42 325
1	24	BACKUP RING	223202309	40 311
1	25	GASKET	223171001	39292AMK
1	-	COTTER PIN		33997AMK
1	26	GASKET	FA0004126	39295AMK
2	27	GASKET	FA0003388	39296AMK
1	46	GASKET	E20021985	39294AMK
1	47	BACKUP RING	223202217	39298AMK

BREAKER SERVICE INC
 800-626-5250 office 888-267-7690 fax

MCGRAW EDISON
OA-4 MECHANISMS REPAIR KIT
OEM SHC00043A

DATE: 11/23/06
 DWG. NO: **K12302**
 SCALE: NTS Date: SHEET 1 OF 1