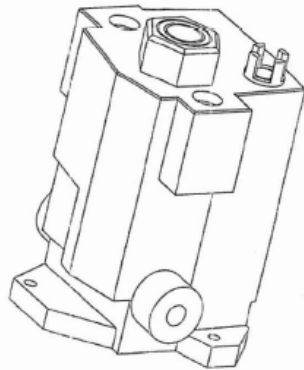
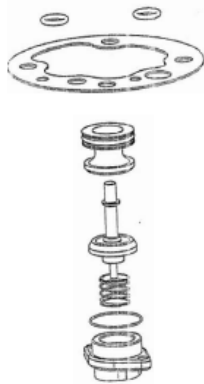




ROSS ITEMS



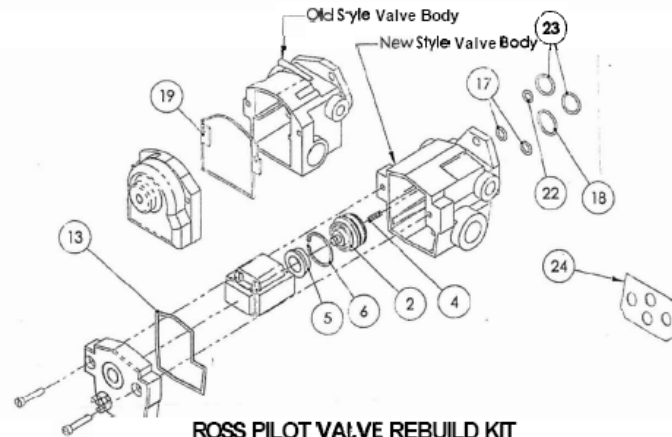
ROSS PILOT
BSI PART 37450AMK



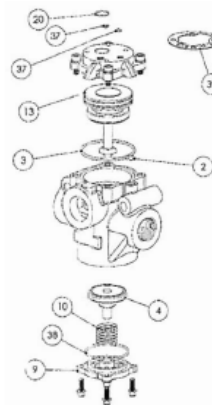
1/4, 3/8 & 1/2
BSI 37887AMK

ROSS MAIN CONTROL VALVE REPAIR KIT
1/2, 3/4 & 1
BSI 37169AMK

INCLUDES QTY 1 EACH:
37450AMK, K12274, 37887AMK, 37169AMK & 37882AMK



ROSS PILOT VALVE REBUILD KIT
BSI KIT K12274



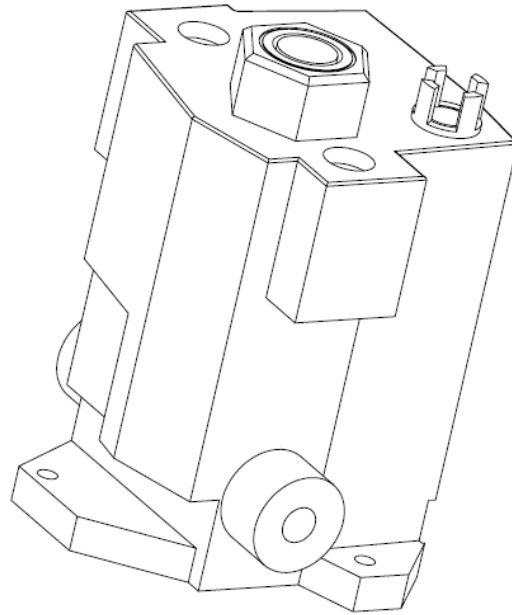
1-1/4 & 1-1/2
BSI 37882AMK

PROPRIETARY AND CONFIDENTIAL
THE INFORMATION CONTAINED IN THIS DRAWING IS THE SOLE PROPERTY OF BREAKER SERVICE INC. ANY REPRODUCTION IN PART OR AS A WHOLE WITHOUT THE WRITTEN PERMISSION OF BREAKER SERVICE INC. IS PROHIBITED.
COPYRIGHT 2002

BREAKER SERVICE INC
800-926-5250 office 838-267-7690 fax

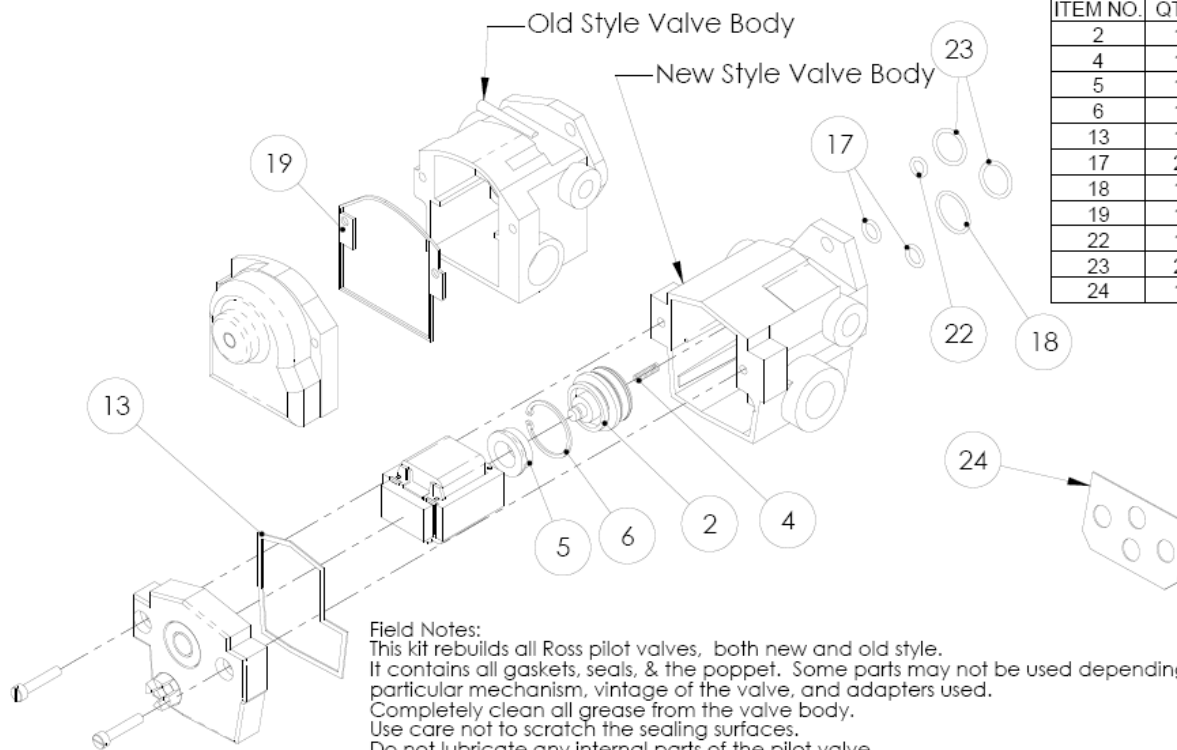
ROSS VALVE FIRST AID KIT
REPAIRS ALL ROSS MAIN & PILOT VALVES

SIZE	DWG. NO.	REV.
A	38275AMK	0
SCALE: NTS	Date:	SHEET 1 OF 1



PROPRIETARY AND CONFIDENTIAL
THE INFORMATION CONTAINED IN THIS
DRAWING IS THE SOLE PROPERTY OF
BREAKER SERVICE INC. ANY
REPRODUCTION IN PART OR AS A WHOLE
WITHOUT THE WRITTEN PERMISSION OF
BREAKER SERVICE INC. IS PROHIBITED.
COPYRIGHT 2002

BREAKER SERVICE INC		
800-826-5250 office 888-267-7690 fax		
Ross Pilot Valve with coil for 125vdc operation		
SIZE A	DWG. NO. 37450AMK	REV. 0
SCALE:1:1	Date: 02-02-2002	SHEET 1 OF 1



ITEM NO.	QTY.	DESCRIPTION
2	1	poppet assembly
4	1	spring
5	1	bumper
6	1	retaining ring
13	1	new style cover gasket
17	2	o-ring
18	1	o-ring
19	1	old style cover gasket
22	1	o-ring
23	2	o-ring
24	1	gasket

Field Notes:

This kit rebuilds all Ross pilot valves, both new and old style. It contains all gaskets, seals, & the poppet. Some parts may not be used depending on the particular mechanism, vintage of the valve, and adapters used.

Completely clean all grease from the valve body.

Use care not to scratch the sealing surfaces.

Do not lubricate any internal parts of the pilot valve.

There should be only one spring in the pilot valve - it is located under the poppet as shown in the drawing.

If the sealing surfaces are scored, then the valve must be replaced.

Time the breaker before (if possible) and after rebuilding the pilot valve.

Use item 23 & 24 for the Westinghouse style main control valve with adapter block.

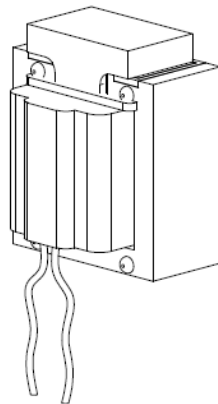
Use items 17 for Ross main valves with ports 1" & smaller

Use items 18 & 22 for Ross main valves with ports larger than 1"

The internal parts (items 2, 4, 5, & 6) are the same for the old & new style pilot valve bodies, but not illustrated above for the old style valve body.

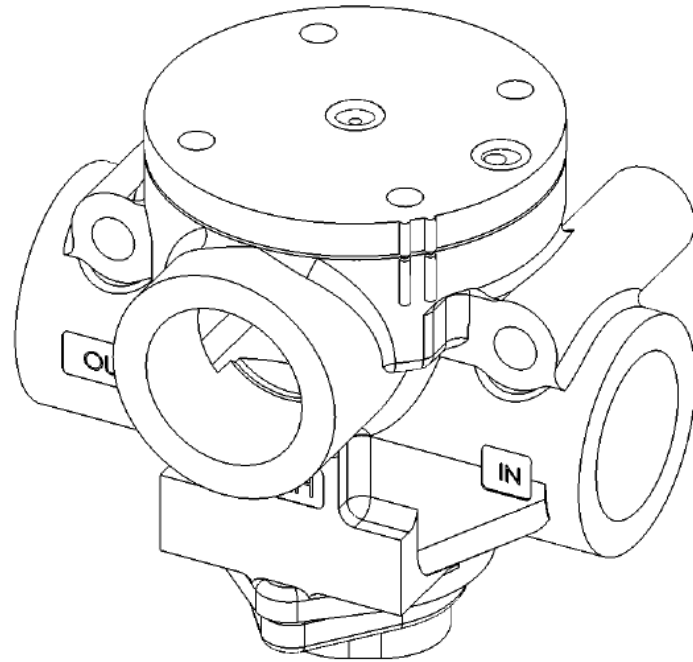
PROPRIETARY AND CONFIDENTIAL
 THE INFORMATION CONTAINED IN THIS DRAWING IS THE SOLE PROPERTY OF BREAKER SERVICE INC. ANY REPRODUCTION IN PART OR AS A WHOLE WITHOUT THE WRITTEN PERMISSION OF BREAKER SERVICE INC. IS PROHIBITED. COPYRIGHT 2002

BREAKER SERVICE INC		
800-826-5250 office 888-267-7690 fax		
Ross pilot valve rebuild kit		
SIZE A	DWG. NO. 12274	REV. 6
SCALE: 1:2.5 Date: 09-02-2003		SHEET 1 OF 1



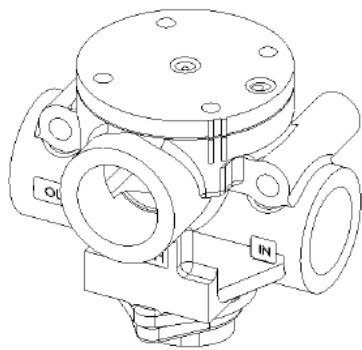
PROPRIETARY AND CONFIDENTIAL
THE INFORMATION CONTAINED IN THIS
DRAWING IS THE SOLE PROPERTY OF
BREAKER SERVICE INC. ANY
REPRODUCTION IN PART OR AS A WHOLE
WITHOUT THE WRITTEN PERMISSION OF
BREAKER SERVICE INC. IS PROHIBITED.
COPYRIGHT 2003

BREAKER SERVICE INC		
800-826-5250 office 888-267-7690 fax		
Solenoid assembly for all Ross pilot valves. Universal coil can be used for 48vdc, 125vdc, and 250vdc		
SIZE A	DWG. NO. 38168AMK	REV. 0
SCALE 1:1	Date: 05-10-2004	SHEET 1 OF 2

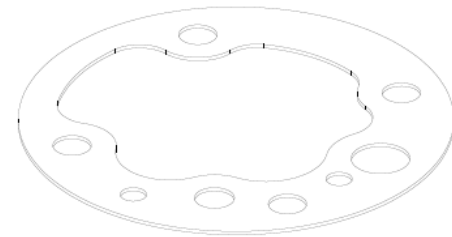
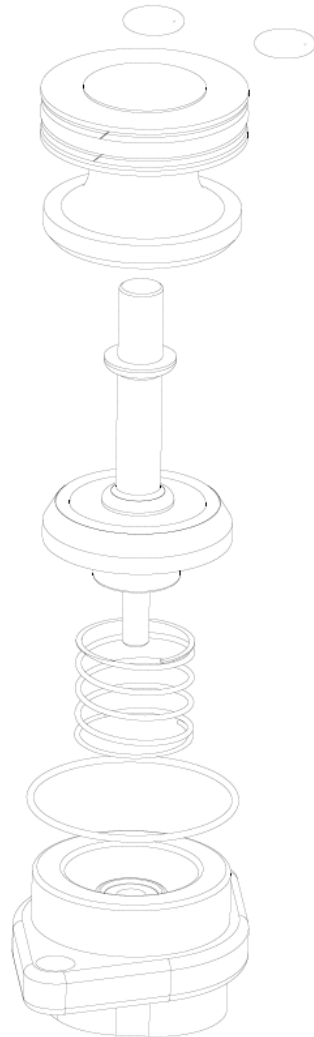


PROPRIETARY AND CONFIDENTIAL
THE INFORMATION CONTAINED IN THIS
DRAWING IS THE SOLE PROPERTY OF
BREAKER SERVICE INC. ANY
REPRODUCTION IN PART OR AS A WHOLE
WITHOUT THE WRITTEN PERMISSION OF
BREAKER SERVICE INC. IS PROHIBITED.
COPYRIGHT 2003

BREAKER SERVICE INC			
800-826-5250 office 888-267-7690 fax			
Ross main control valve for Westinghouse AA-7 mechanism			
SIZE A	DWG. NO. 37451AMK	REV. 0	
SCALE 1:1	Date: 02-02-2003	SHEET 1 OF 1	



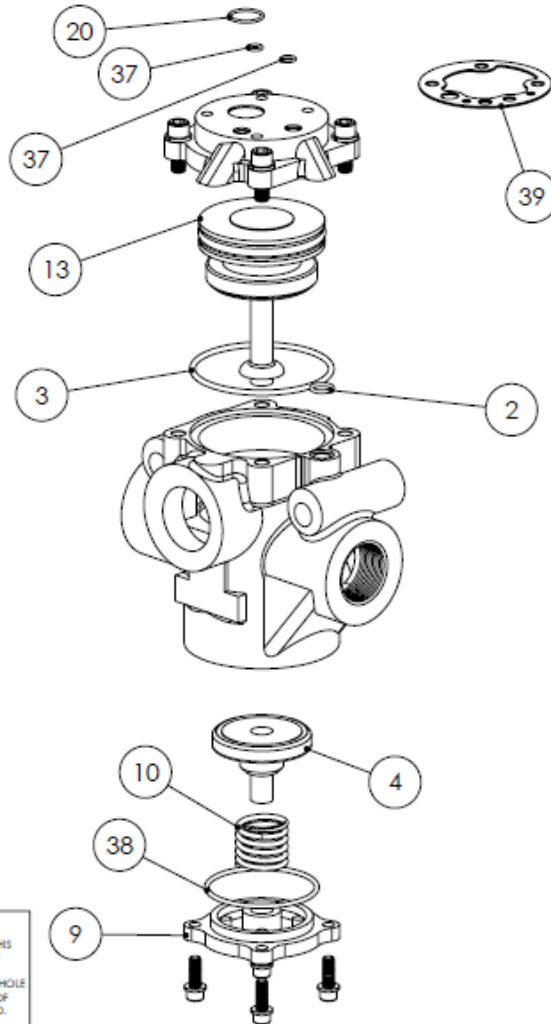
Valve body shown
for reference only



All parts shown are
included in the rebuild kit

PROPRIETARY AND CONFIDENTIAL
THE INFORMATION CONTAINED IN THIS
DRAWING IS THE SOLE PROPERTY OF
BREAKER SERVICE INC. ANY
REPRODUCTION IN PART OR AS A WHOLE
WITHOUT THE WRITTEN PERMISSION OF
BREAKER SERVICE INC. IS PROHIBITED.
COPYRIGHT 2003

BREAKER SERVICE INC 800-826-5250 office 888-267-7690 fax			
Rebuild kit for Ross main control valve for Westinghouse AA-7 mechanism			
SIZE A	DWG. NO. 37169AMK	REV. 0	
SCALE 1:1	Date: 09-20-2004	SHEET 1 OF 1	



ITEM NO.	QTY.	DESCRIPTION
2	1	o-ring
3	1	o-ring
4	1	lower poppet
9	1	bottom plate
10	1	spring
13	1	upper poppet assy
20	1	o-ring
37	2	o-ring
38	1	o-ring
39	1	gasket

FIELD NOTES:

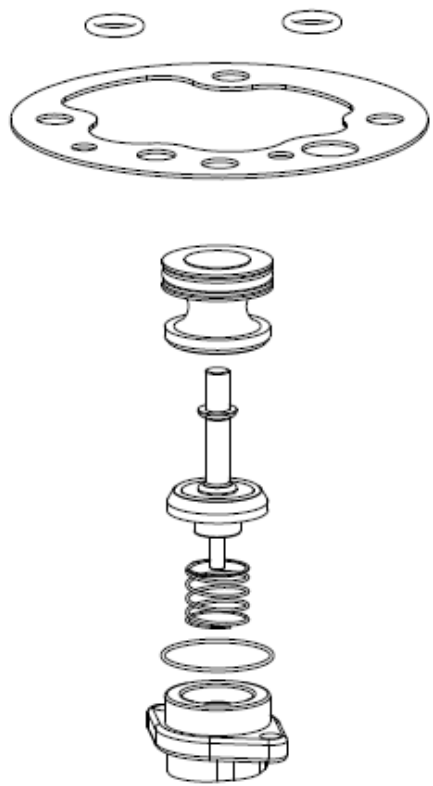
Time the breaker before & after you rebuild the main closing control valve.

Apply only a very thin film of the supplied grease to the moving piston seal on the upper poppet. All static o-rings (items 20,37,2,3,&38) should be lightly coated with a high quality o-ring grease such as Dow Corning # 111.

All the gaskets and o-rings may not be necessary depending on the exact configuration of your control valve.

PROPRIETARY AND CONFIDENTIAL
 THE INFORMATION CONTAINED IN THIS DRAWING IS THE SOLE PROPERTY OF BREAKER SERVICE INC. ANY REPRODUCTION IN PART OR AS A WHOLE WITHOUT THE WRITTEN PERMISSION OF BREAKER SERVICE INC. IS PROHIBITED. COPYRIGHT 2003

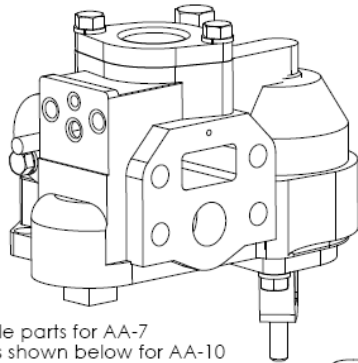
BREAKER SERVICE INC		REV. 0
800-826-5250 office 888-267-7690 fax		
Rebuild kit for Ross main control valves with 1-1/4" & 1-1/2" NPT ports.		
SIZE A	DWG. NO. 37882AMK	
SCALE 1:1	Date: 09-16-2003	SHEET 1 OF 1



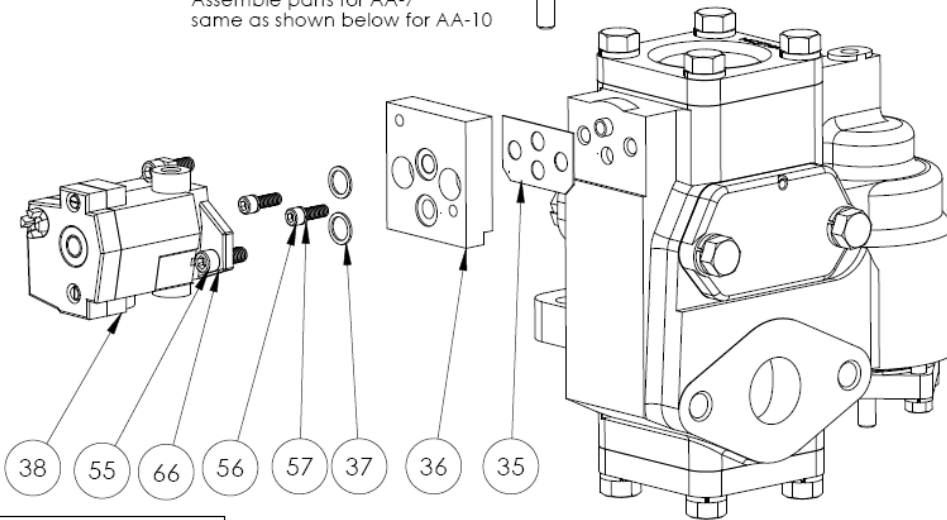
PROPRIETARY AND CONFIDENTIAL
THE INFORMATION CONTAINED IN THIS DRAWING IS THE SOLE PROPERTY OF BREAKER SERVICE INC. ANY REPRODUCTION IN PART OR AS A WHOLE WITHOUT THE WRITTEN PERMISSION OF BREAKER SERVICE INC. IS PROHIBITED. COPYRIGHT 2002

BREAKER SERVICE INC		
800-826-5250 office 888-267-7690 fax		
Rebuild kit for Ross Main Control Valve with 1/2" ports, metal parts		
SIZE A	DWG. NO. 37887AMK	REV. 0
SCALE: NTS	Date: 01-15-2003	SHEET 1 OF 1

Westinghouse AA-7 main control valve



Assemble parts for AA-7 same as shown below for AA-10



Westinghouse AA-10 main control valve

Item No	BSI part #	Description	Qty
35	30525/37131AMK	gasket	1
36	37990AMK	adapter	1
37	2112470/37124AMK	o-ring	2
38	37450AMK	Ross pilot valve	1
55	37134AMK	socket head cap screw, 1/4-20 x 1"	2
56	38596AMK	socket head cap screw, 3/8-16 x 1"	2
57	37144AMK	lock washer, 3/8"	2
66	37145AMK	lock washer, 1/4"	2

Notes:

1. Always time the breaker before (if possible) and after replacing the pilot valve to ensure proper closing speed.
2. This kit is for use on the mechanisms listed below that are used on oil circuit breakers and the Westinghouse model 2300SF GCB.
3. If replacing a Norgren pilot valve with an external pilot pressure feed into port "P" on the old Norgren pilot valve, remove and discard the pipe plug from port "X1" on the new Ross pilot valve and connect the external pilot pressure tubing to the port on the Ross pilot valve marked "X1". The port on the Ross pilot valve marked "Y3" is the pilot exhaust and should always remain unplugged.

PROPRIETARY AND CONFIDENTIAL
 THE INFORMATION CONTAINED IN THIS DRAWING IS THE SOLE PROPERTY OF BREAKER SERVICE INC. ANY REPRODUCTION IN PART OR AS A WHOLE WITHOUT THE WRITTEN PERMISSION OF BREAKER SERVICE INC. IS PROHIBITED.
 COPYRIGHT 2005

BREAKER SERVICE INC
 800-826-5250 office 888-267-7690 fax

Kit to replace the Westinghouse "magnet valve" pilot valve or Norgren D0035A pilot valve on AA-7, AA-10, & AA-14 W.H. main control valves with a Ross pilot valve - see notes for limitations

SIZE	DWG. NO.	REV.
A	37993AMK	4

SCALE: 1:3 Date: 02-18-2005 SHEET 1 OF 1